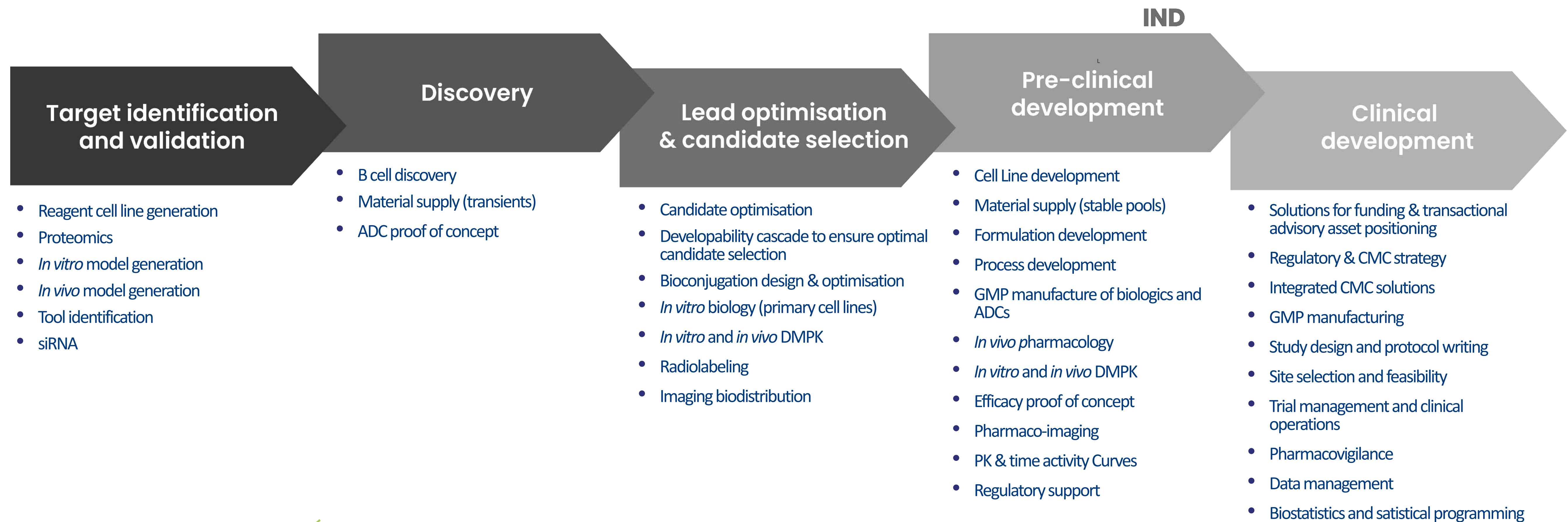




### A premium expert ecosystem to support your biologics drug discovery & development

- The discovery and development of new biological entities and biological therapeutic products represent a rapidly growing market in various therapeutic areas, with **about 10 to 15 biologics being approved each year**.
- Successful R&D requires pharma, biotech and start-ups, contract research and technological-based companies to co-operate in a synergistic fashion, each partner bringing its scientific contribution and technical expertise. **Building the right internal and external partnerships** (i.e. a community of experts who can leverage their unique strengths and share a common goal) **helps de-risk a drug development program**.
- We have built a premium expert ecosystem services – **DRIVE-Biologics** – to support and accelerate biologics drug discovery and development in oncology, immuno-oncology, inflammatory and infectious diseases.
- The **DRIVE-Biologics consortium provides a unique integrated solution with specialist services** from strategic partners, to access market analysis, and establish the ability to design, optimize and develop novel biological entities addressing the therapeutic target of interest. DRIVE-Biologics supplies the high-level, IND-focused discipline to rigorously manage the integrated programs from the early stages of discovery through to preclinical development, CMC, manufacturing, regulatory affairs and clinical trials.
- Herein, we provide an overview of the optimization and preclinical evaluation process to select promising biologics and list the key parameters to be checked.

### Three expert partners for your integrated drug discovery programs for biologics

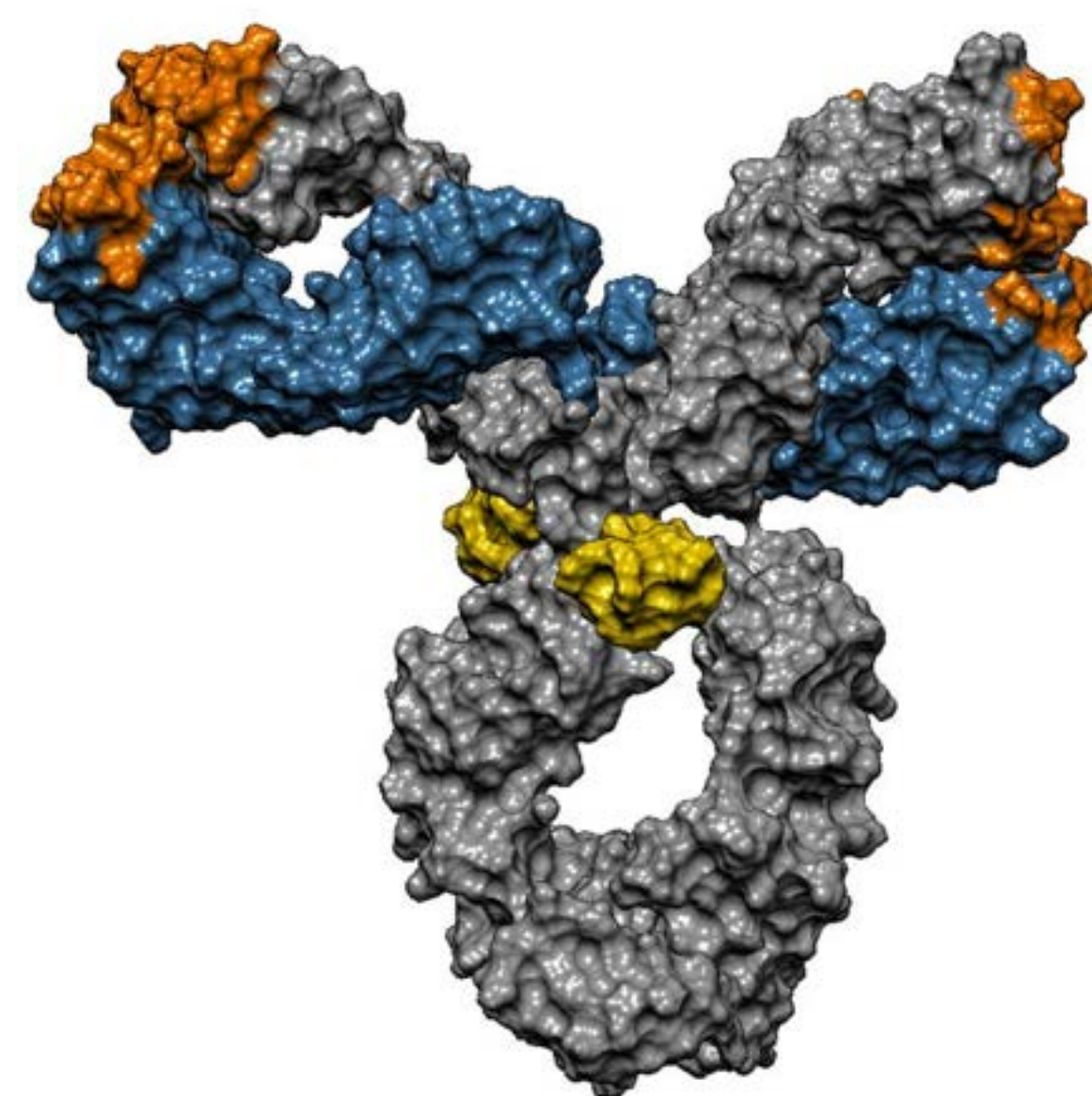


At Abzena, **our vision is to consistently and reliably deliver the world's most cutting-edge biologic and bioconjugate therapies to our customers and their patients.**

We offer customizable, integrated or individual services for the development and manufacture of your biologic or bioconjugate programs, from target validation, discovery and lead selection through to GMP manufacturing of biologics and bioconjugates. Our highly experienced team partners with you to truly understand your drug candidates, ensuring the candidates you take forward have reduced liabilities and a de-risked development path.

Our approach answers three fundamental questions that are essential for successful drug development:

- Does it work?
- Is it safe?
- Can we make it?



**Drug development requires a multiparametric and holistic approach**

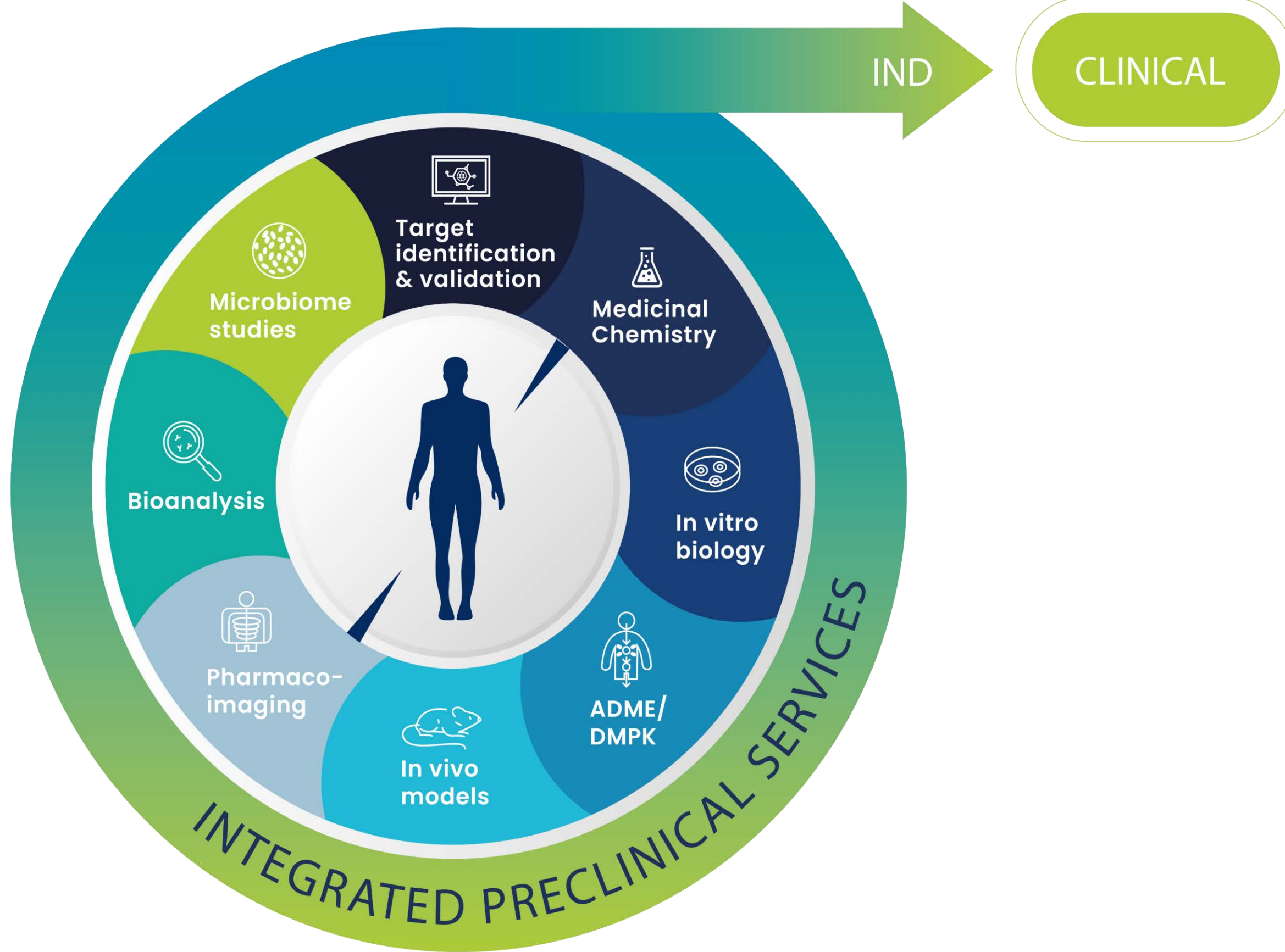
- Specificity**  
Ensures target binding with required affinity and desired cross-reactivity
- Functionality**  
Assesses target driven, intrinsic (e.g. FcR) and extrinsic (e.g. payload-conjugate) components
- Immunogenicity & Safety**  
Assesses the likelihood of candidates causing an undesirable immune response
- Manufacturability**  
Assesses the candidates for issues that may affect their ability to be manufactured

Developability aims to identify the best candidate to progress to pre-clinical development



Oncodesign Services is a contract research organization (CRO) specialized in drug discovery. **Our mission is to contribute to the discovery of innovative therapies** against diseases with high medical needs in oncology, inflammation and infectious diseases.

Our **multi-disciplinary teams** aim to deliver fast cycle times, with tight communication and determination to deliver success in your drug discovery project. We work at pharmaceutical standards delivering processes and results that can be scaled-up for preclinical candidate selection and beyond.

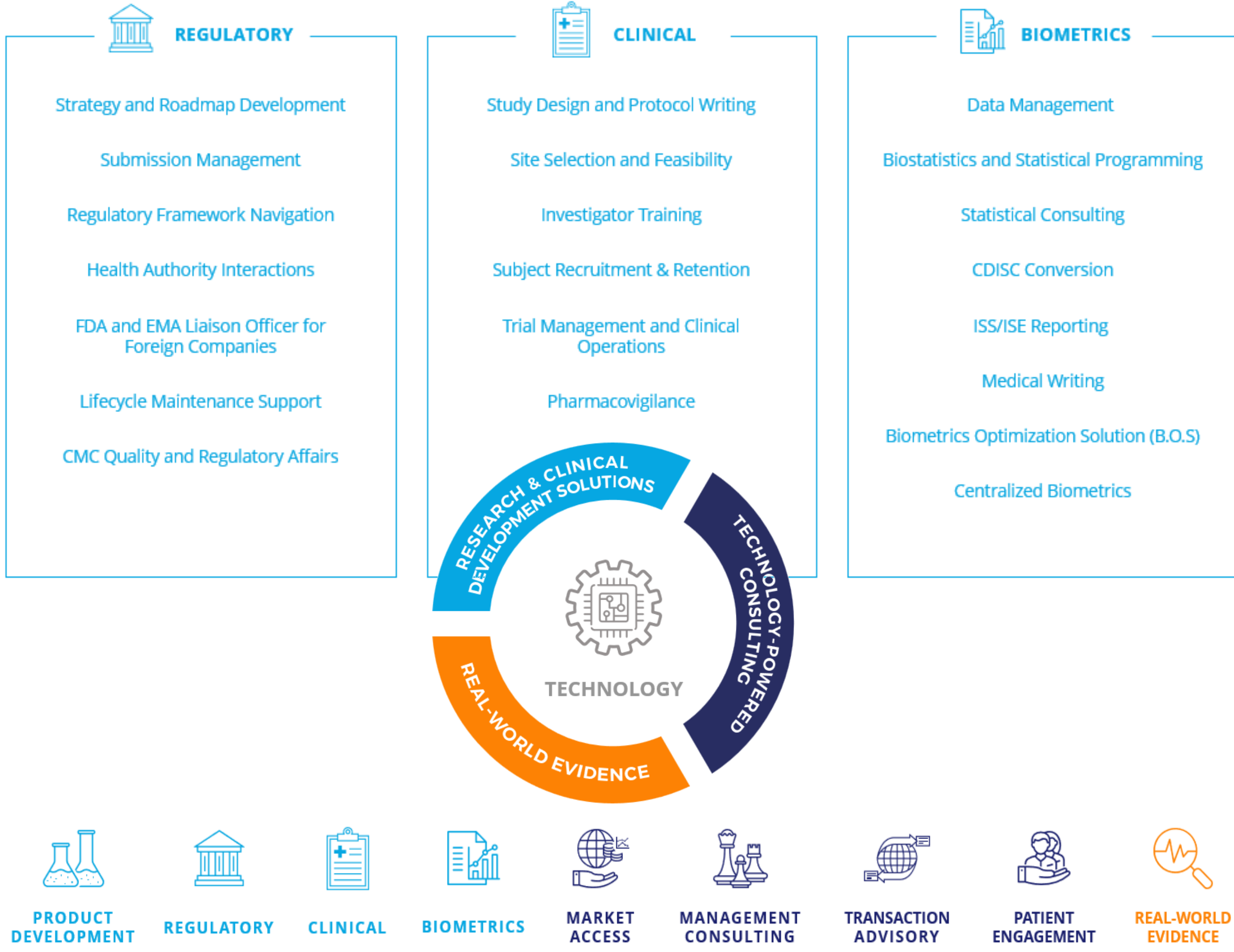


Supplying Integrated Drug Discovery services to support your R&D programs



At Alira Health, **our mission is to humanize healthcare.**

We complement your expertise with a full spectrum of patient-centric data and tech-enabled services to uncover opportunity, accelerate innovation, and improve outcomes for patients around the world.



Idea. Innovation. Transformation. Humanizing Healthcare